

Wilkinson Rd between West Saanich Rd and Mann Ave
February 25, 2020 To February 27, 2020



The data presented here is for information purposes only and should not be considered authoritative for construction, geotechnical, engineering, navigational, legal, or other site-specific uses. The information shared is owned by the Transportation Division of the Engineering Department at the District of Saanich. Accuracy is not guaranteed.

Start Date: 24-Feb-20
 Start Time: 0:00
 Station ID: M0041-01

Location 1: Wilkinson Rd between West Saanich Rd and Mann Ave

Note:

DATE:	February 24, 2020		February 25, 2020		February 26, 2020		February 27, 2020		February 28, 2020		WK AVG		WK AVG	HOURLY
	MON		TUE		WED		THURS		FRI		EB	WB	CH 1+2	%
Time:	EB	WB	EB	WB	EB	WB	EB	WB	EB	WB	EB	WB		
12-1 AM			20	27	29	38	22	31			24	32	56	0.4%
1-2 AM			15	6	17	6	15	11			16	8	23	0.2%
2-3 AM			16	9	18	17	14	5			16	10	26	0.2%
3-4 AM			21	7	27	10	30	14			26	10	36	0.3%
4-5 AM			69	19	57	22	66	17			64	19	83	0.6%
5-6 AM			205	55	176	61	157	51			179	56	235	1.8%
6-7 AM			450	160	428	150	428	145			435	152	587	4.5%
7-8 AM			538	312	504	345	537	320			526	326	852	6.5%
8-9 AM			539	320	626	384	555	358			573	354	927	7.1%
9-10 AM			478	364	478	366	481	367			479	366	845	6.4%
10-11 AM			434	377	452	360	432	354			439	364	803	6.1%
11-12 PM			478	406	465	422	431	374			458	401	859	6.5%
12-1 PM			464	392	480	412	437	407			460	404	864	6.6%
1-2 PM			457	353	498	416	440	432			465	400	865	6.6%
2-3 PM			456	391	478	354	470	401			468	382	850	6.5%
3-4 PM			536	426	577	376	563	442			559	415	973	7.4%
4-5 PM			527	446	538	344	484	425			516	405	921	7.0%
5-6 PM			501	412	478	382	493	398			491	397	888	6.8%
6-7 PM			365	360	369	401	401	390			378	384	762	5.8%
7-8 PM			250	327	263	302	310	283			274	304	578	4.4%
8-9 PM			217	234	216	192	219	203			217	210	427	3.2%
9-10 PM			159	163	191	210	144	211			165	195	359	2.7%
10-11 PM			91	96	120	113	100	90			104	100	203	1.5%
11-12 AM			51	70	59	62	76	62			62	65	127	1.0%
LANES			7337	5732	7544	5745	7305	5791			7395	5756	13151	100.0%
TOTAL			13069		13289		13096				13160			
	MON		TUE		WED		THURS		FRI		WK AVG			

PEAK HOUR					TOTAL VEHICALS-PEAK PERIODS		2 HOUR PEAK INTERVALS				
MAX. 7 - 9 am PEAK HOUR	927	⇒	7.1%	between 8-9 AM	5311	⇒	6 HR TOTAL	2 HR AM (7 - 9 AM)			
MAX. 7 - 11 am PEAK HOUR	927	⇒	7.1%	between 8-9 AM	3589	⇒	4 HR TOTAL	VEH / HR	VEH / 2HR	2 HR %	
								7-8 AM	852	1779	13.5%
								8-9 AM	927		
MAX. 11 am - 1 pm PEAK HOUR	864	⇒	6.6%	between 12-1 PM	24 HOUR FACTORS		2 HR NOON (11 - 1 PM)				
MAX. 11 am - 3 pm PEAK HOUR	865	⇒	6.6%	between 1-2 PM			VEH / HR	VEH / 2HR	2 HR %		
							11-12 PM	859	1723	13.1%	
MAX. 4 - 6 pm PEAK HOUR	921	⇒	7.0%	between 4-5 PM	2.48	⇒	6-24 HR FACT.	12-1 PM	864		
MAX. 3 - 6 pm PEAK HOUR	973	⇒	7.4%	between 3-4 PM	3.66	⇒	4-24 HR FACT.	2 HR PM (4 - 6 PM)			
								VEH / HR	VEH / 2HR	2 HR %	
								4-5 PM	921	1809	13.8%
								5-6 PM	888		

Wilkinson Rd between West Saanich Rd and Mann Ave

Westbound

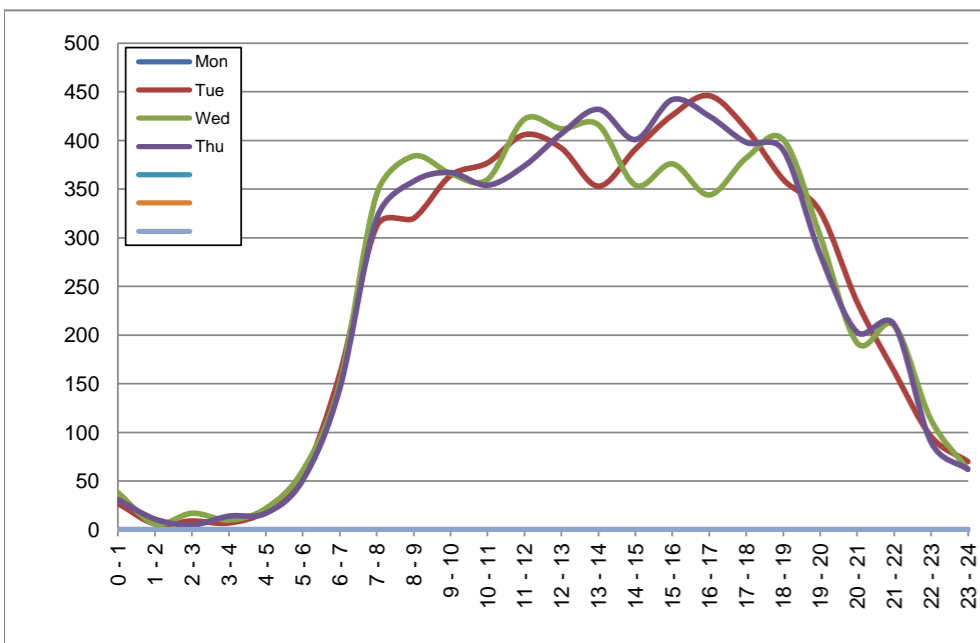
February 24, 2020 to February 27, 2020

Hourly Volumes

Time Period	Mon	Tue	Wed	Thu			
	Feb 24	Feb 25	Feb 26	Feb 27			
0 - 1		27	38	31			
1 - 2		6	6	11			
2 - 3		9	17	5			
3 - 4		7	10	14			
4 - 5		19	22	17			
5 - 6		55	61	51			
6 - 7		160	150	145			
7 - 8		312	345	320			
8 - 9		320	384	358			
9 - 10		364	366	367			
10 - 11		377	360	354			
11 - 12		406	422	374			
12 - 13		392	412	407			
13 - 14		353	416	432			
14 - 15		391	354	401			
15 - 16		426	376	442			
16 - 17		446	344	425			
17 - 18		412	382	398			
18 - 19		360	401	390			
19 - 20		327	302	283			
20 - 21		234	192	203			
21 - 22		163	210	211			
22 - 23		96	113	90			
23 - 24		70	62	62			
Day Total		5732	5745	5791			

15-Minute Volumes

Time Start	Mon	Tue	Wed	Thu				Time Start	Mon	Tue	Wed	Thu			
	Feb 24	Feb 25	Feb 26	Feb 27					Feb 24	Feb 25	Feb 26	Feb 27			
0:00		8	11	10				12:00		99	100	119			
0:15		10	9	5				12:15		106	122	83			
0:30		5	6	11				12:30		88	92	110			
0:45		4	12	5				12:45		99	98	95			
1:00		1	1	1				13:00		79	106	128			
1:15		1	1	7				13:15		83	115	93			
1:30		3	2	0				13:30		97	92	108			
1:45		1	2	3				13:45		94	103	103			
2:00		2	6	1				14:00		100	85	108			
2:15		3	4	0				14:15		88	88	101			
2:30		0	3	0				14:30		111	97	88			
2:45		4	4	4				14:45		92	84	104			
3:00		2	2	3				15:00		117	104	98			
3:15		2	1	5				15:15		98	108	125			
3:30		2	4	3				15:30		106	89	119			
3:45		1	3	3				15:45		105	75	100			
4:00		0	3	3				16:00		101	89	90			
4:15		3	4	6				16:15		96	77	113			
4:30		5	8	1				16:30		118	94	124			
4:45		11	7	7				16:45		131	84	98			
5:00		10	15	6				17:00		115	88	113			
5:15		13	8	12				17:15		97	100	105			
5:30		10	14	15				17:30		101	100	94			
5:45		22	24	18				17:45		99	94	86			
6:00		20	22	23				18:00		81	107	102			
6:15		40	41	39				18:15		94	97	94			
6:30		45	47	31				18:30		86	84	94			
6:45		55	40	52				18:45		99	113	100			
7:00		59	77	71				19:00		106	116	85			
7:15		81	74	66				19:15		92	64	63			
7:30		90	103	101				19:30		80	67	75			
7:45		82	91	82				19:45		49	55	60			
8:00		86	92	82				20:00		47	59	50			
8:15		86	103	77				20:15		60	43	62			
8:30		73	80	91				20:30		71	46	43			
8:45		75	109	108				20:45		56	44	48			
9:00		91	100	88				21:00		62	77	86			
9:15		97	92	114				21:15		31	50	48			
9:30		84	80	73				21:30		37	39	46			
9:45		92	94	92				21:45		33	44	31			
10:00		95	93	82				22:00		34	38	28			
10:15		99	84	88				22:15		20	26	23			
10:30		86	90	102				22:30		20	21	23			
10:45		97	93	82				22:45		22	28	16			
11:00		118	108	80				23:00		21	21	23			
11:15		123	96	89				23:15		21	17	19			
11:30		85	111	110				23:30		12	9	12			
11:45		80	107	95				23:45		16	15	8			



Site notes:

Wilkinson Rd between West Saanich Rd and Mann Ave

Eastbound

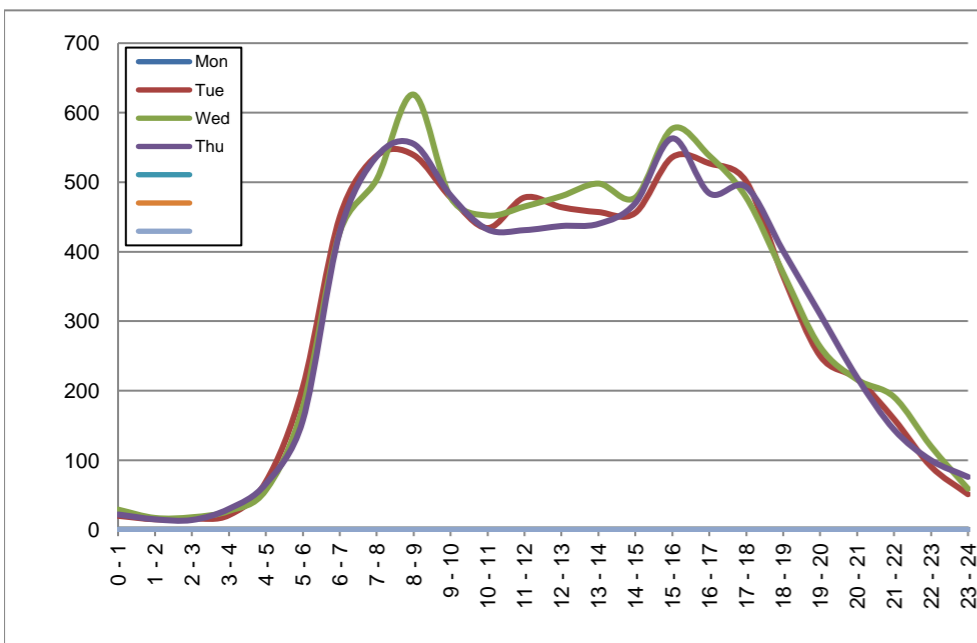
February 24, 2020 to February 27, 2020

Hourly Volumes

Time Period	Mon	Tue	Wed	Thu			
	Feb 24	Feb 25	Feb 26	Feb 27			
0 - 1		20	29	22			
1 - 2		15	17	15			
2 - 3		16	18	14			
3 - 4		21	27	30			
4 - 5		69	57	66			
5 - 6		205	176	157			
6 - 7		450	428	428			
7 - 8		538	504	537			
8 - 9		539	626	555			
9 - 10		478	478	481			
10 - 11		434	452	432			
11 - 12		478	465	431			
12 - 13		464	480	437			
13 - 14		457	498	440			
14 - 15		456	478	470			
15 - 16		536	577	563			
16 - 17		527	538	484			
17 - 18		501	478	493			
18 - 19		365	369	401			
19 - 20		250	263	310			
20 - 21		217	216	219			
21 - 22		159	191	144			
22 - 23		91	120	100			
23 - 24		51	59	76			
Day Total		7337	7544	7305			

15-Minute Volumes

Time Start	Mon	Tue	Wed	Thu			
	Feb 24	Feb 25	Feb 26	Feb 27			
0:00		8	9	7			
0:15		7	12	3			
0:30		5	5	9			
0:45		0	3	3			
1:00		1	3	4			
1:15		4	3	4			
1:30		4	6	4			
1:45		6	5	3			
2:00		2	3	4			
2:15		3	5	4			
2:30		3	4	4			
2:45		8	6	2			
3:00		1	3	4			
3:15		5	6	6			
3:30		7	8	11			
3:45		8	10	9			
4:00		14	7	14			
4:15		20	16	22			
4:30		22	20	15			
4:45		13	14	15			
5:00		31	30	16			
5:15		30	35	30			
5:30		66	51	52			
5:45		78	60	59			
6:00		95	77	78			
6:15		103	97	103			
6:30		135	136	128			
6:45		117	118	119			
7:00		114	115	104			
7:15		139	128	127			
7:30		135	132	154			
7:45		150	129	152			
8:00		132	135	155			
8:15		134	151	129			
8:30		147	177	155			
8:45		126	163	116			
9:00		113	118	112			
9:15		139	120	114			
9:30		119	120	133			
9:45		107	120	122			
10:00		112	108	104			
10:15		118	104	113			
10:30		103	110	108			
10:45		101	130	107			
11:00		116	109	103			
11:15		114	123	101			
11:30		123	113	101			
11:45		125	120	126			
12:00			116	96	126		
12:15			136	126	109		
12:30			106	122	96		
12:45			106	136	106		
13:00			115	117	108		
13:15			120	132	112		
13:30			121	134	118		
13:45			101	115	102		
14:00			108	125	117		
14:15			106	91	114		
14:30			125	110	90		
14:45			117	152	149		
15:00			122	151	125		
15:15			151	152	142		
15:30			131	147	153		
15:45			132	127	143		
16:00			138	131	126		
16:15			121	127	132		
16:30			144	129	110		
16:45			124	151	116		
17:00			117	120	140		
17:15			146	122	143		
17:30			123	110	114		
17:45			115	126	96		
18:00			101	100	107		
18:15			73	93	96		
18:30			105	77	104		
18:45			86	99	94		
19:00			81	83	84		
19:15			67	64	90		
19:30			51	49	63		
19:45			51	67	73		
20:00			51	56	54		
20:15			56	54	61		
20:30			56	50	52		
20:45			54	56	52		
21:00			43	47	46		
21:15			34	65	39		
21:30			47	36	35		
21:45			35	43	24		
22:00			28	40	34		
22:15			23	30	19		
22:30			22	25	30		
22:45			18	25	17		
23:00			20	16	31		
23:15			9	14	25		
23:30			13	15	9		
23:45			9	14	11		



Site notes:

Vehicle Speed Summary

Saanich Engineering Department

Count Id: [M0041-01](#)

Filename: [Wilkinson Rd between West Saanich Rd and Mann Ave-Feb-2020.xlsm](#)

Location: Wilkinson Rd between West Saanich Rd and Mann Ave

Note:

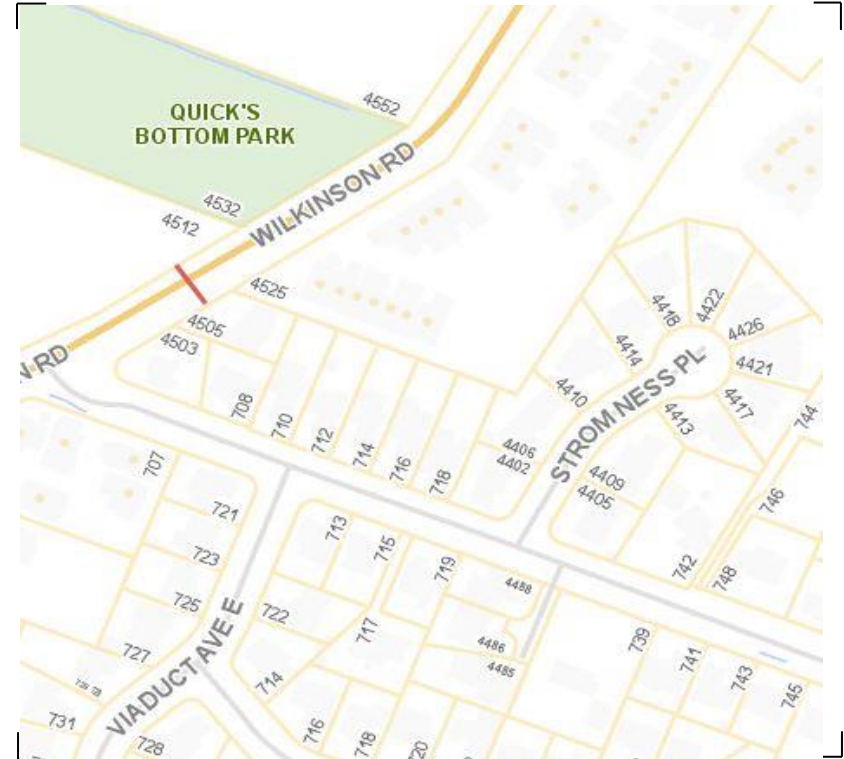
Direction: **East-West**

Dates: **February 25, 2020 To February 27, 2020**

Filtered data

AVG. SPEED	33 mph	53 km/h
50 % SPEED	33 mph	54 km/h
85 % SPEED	37 mph	60 km/h
95 % SPEED	39 mph	63 km/h

Location Map



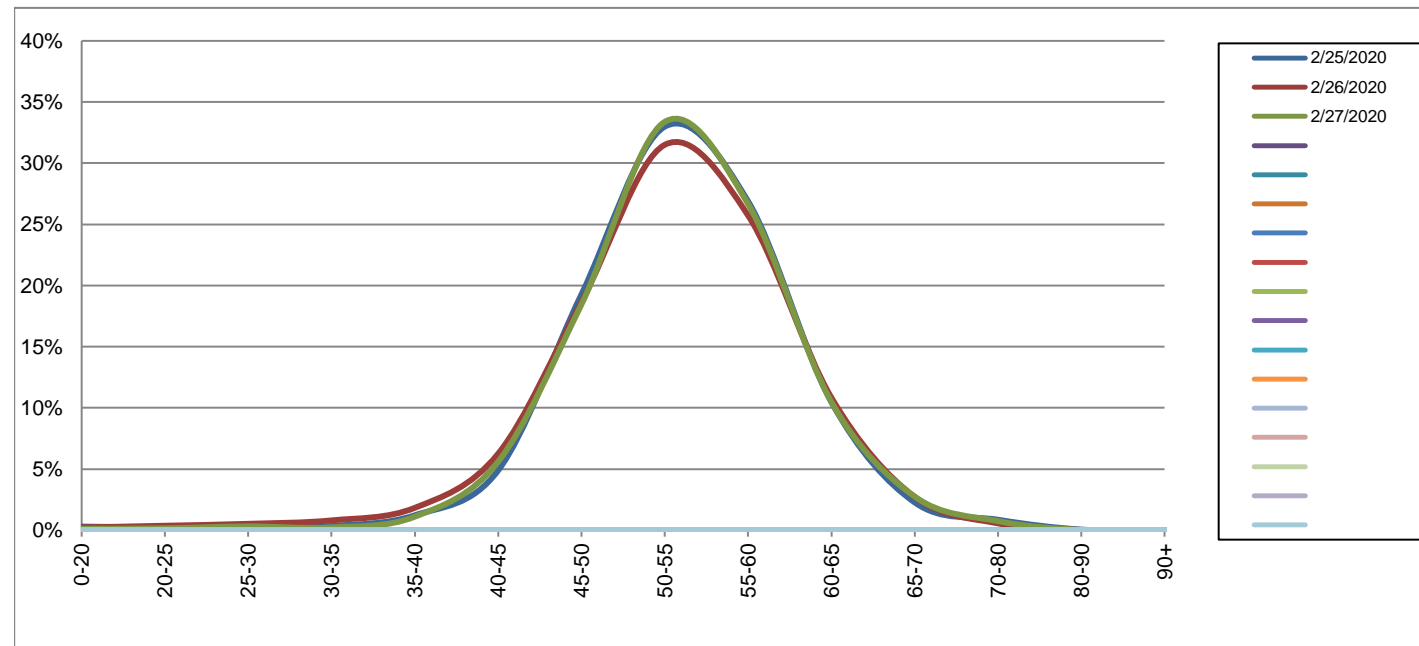
Wilkinson Rd between West Saanich Rd and Mann Ave

Westbound
February 25, 2020 to February 27, 2020

Daily Speed Bin Percentages														Daily Speed Bin Volumes														Total	Avg.	
Bin #	1	2	3	4	5	6	7	8	9	10	11	12	13	14	1	2	3	4	5	6	7	8	9	10	11	12	13	14	Volume	Speed
Bin Speeds	0-20	20-25	25-30	30-35	35-40	40-45	45-50	50-55	55-60	60-65	65-70	70-80	80-90	90+	0-20	20-25	25-30	30-35	35-40	40-45	45-50	50-55	55-60	60-65	65-70	70-80	80-90	90+		
2/25/2020	0.3%	0.2%	0.2%	0.3%	1.2%	4.9%	19.3%	33.0%	26.9%	10.5%	2.3%	0.9%	0.1%	0.0%	17	13	13	20	70	280	1105	1891	1541	600	130	49	3	0	5732	53
2/26/2020	0.2%	0.4%	0.5%	0.8%	1.8%	6.2%	18.7%	31.5%	25.7%	10.8%	2.7%	0.6%	0.0%	0.0%	13	21	30	46	105	359	1072	1810	1478	622	156	32	1	0	5745	53
2/27/2020	0.1%	0.2%	0.3%	0.2%	1.1%	5.6%	18.5%	33.4%	26.7%	10.5%	2.7%	0.7%	0.0%	0.0%	7	9	18	13	64	324	1069	1933	1544	607	159	43	1	0	5791	54
Total	0.2%	0.2%	0.4%	0.5%	1.4%	5.6%	18.8%	32.6%	26.4%	10.6%	2.6%	0.7%	0.0%	0.0%	37	43	61	79	239	963	3246	5634	4563	1829	445	124	5	0	17268	53

Speed Data Summary

Bin #	1	2	3	4	5	6	7	8	9	10	11	12	13	14	Total
Bin Speeds	0-20	20-25	25-30	30-35	35-40	40-45	45-50	50-55	55-60	60-65	65-70	70-80	80-90	90+	
Survey Total	37	43	61	79	239	963	3246	5634	4563	1829	445	124	5	0	17268
% Total	0.2%	0.2%	0.4%	0.5%	1.4%	5.6%	18.8%	32.6%	26.4%	10.6%	2.6%	0.7%	0.0%	0.0%	100%
Accumulated %	0.2%	0.5%	0.8%	1.3%	2.7%	8.2%	27.0%	59.7%	86.1%	96.7%	99.3%	100.0%	100.0%	100%	
Inverse Accum. %	99.8%	99.5%	99.2%	98.7%	97.3%	91.8%	73.0%	40.3%	13.9%	3.3%	0.7%	0.0%	0.0%	0.0%	
Average Speed	53 KM/H														



Site notes:

Wilkinson Rd between West Saanich Rd and Mann Ave

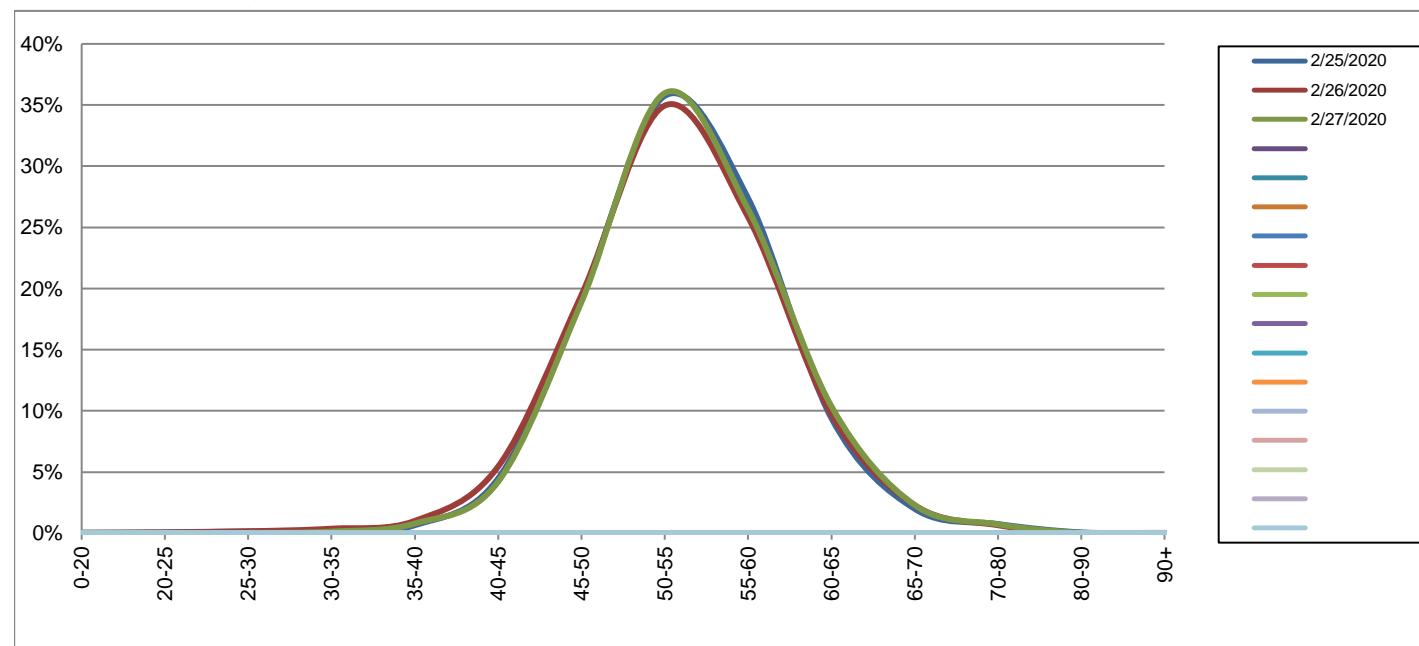
Eastbound

February 25, 2020 to February 27, 2020

Daily Speed Bin Percentages														Daily Speed Bin Volumes														Total	Avg.	
Bin #	1	2	3	4	5	6	7	8	9	10	11	12	13	14	1	2	3	4	5	6	7	8	9	10	11	12	13	14	Volume	Speed
Bin Speeds	0-20	20-25	25-30	30-35	35-40	40-45	45-50	50-55	55-60	60-65	65-70	70-80	80-90	90+	0-20	20-25	25-30	30-35	35-40	40-45	45-50	50-55	55-60	60-65	65-70	70-80	80-90	90+		
2/25/2020	0.0%	0.1%	0.1%	0.1%	0.7%	4.5%	19.1%	35.8%	27.4%	9.4%	2.0%	0.7%	0.1%	0.0%	3	5	11	7	48	328	1405	2623	2009	690	146	55	5	2	7337	54
2/26/2020	0.0%	0.1%	0.2%	0.4%	1.0%	5.4%	19.5%	35.0%	25.8%	9.7%	2.3%	0.6%	0.0%	0.0%	2	5	12	28	76	411	1469	2637	1949	732	173	49	1	0	7544	53
2/27/2020	0.0%	0.0%	0.0%	0.1%	0.8%	4.2%	18.9%	36.0%	26.5%	10.4%	2.3%	0.7%	0.0%	0.0%	3	2	1	10	58	307	1380	2628	1935	758	168	53	2	0	7305	54
Total	0.0%	0.1%	0.1%	0.2%	0.8%	4.7%	19.2%	35.6%	26.6%	9.8%	2.2%	0.7%	0.0%	0.0%	8	12	24	45	182	1046	4254	7888	5893	2180	487	157	8	2	22186	54

Speed Data Summary

Bin #	1	2	3	4	5	6	7	8	9	10	11	12	13	14	Total
Bin Speeds	0-20	20-25	25-30	30-35	35-40	40-45	45-50	50-55	55-60	60-65	65-70	70-80	80-90	90+	
Survey Total	8	12	24	45	182	1046	4254	7888	5893	2180	487	157	8	2	22186
% Total	0.0%	0.1%	0.1%	0.2%	0.8%	4.7%	19.2%	35.6%	26.6%	9.8%	2.2%	0.7%	0.0%	0.0%	100%
Accumulated %	0.0%	0.1%	0.2%	0.4%	1.2%	5.9%	25.1%	60.7%	87.2%	97.1%	99.2%	100.0%	100.0%	100%	
Inverse Accum. %	100.0%	99.9%	99.8%	99.6%	98.8%	94.1%	74.9%	39.3%	12.8%	2.9%	0.8%	0.0%	0.0%	0.0%	
Average Speed	54 KM/H														



Site notes:

Wilkinson Rd between West Saanich Rd and Mann Ave

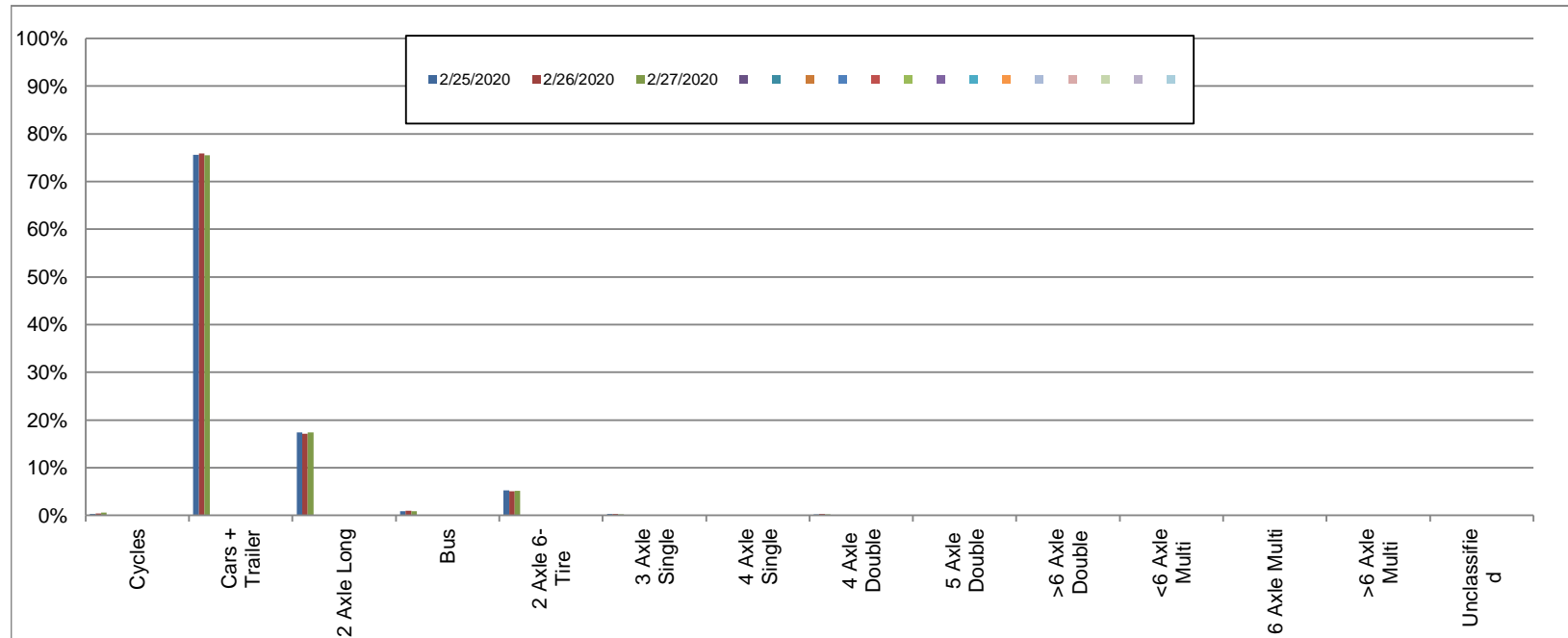
Westbound

February 25, 2020 to February 27, 2020

Daily Class Bin Percentages															Daily Class Bin Volumes											Total Volume				
Bin #	1	2	3	4	5	6	7	8	9	10	11	12	13	14	1	2	3	4	5	6	7	8	9	10	11		12	13	14	
Bin Class	Cycles	Cars + Trailer	2 Axle Long	Bus	2 Axle 6-Tire	3 Axle Single	4 Axle Single	4 Axle Double	5 Axle Double	>6 Axle Double	<6 Axle Multi	6 Axle Multi	>6 Axle Multi	Unclassified	Cycles	Cars + Trailer	2 Axle Long	Bus	2 Axle 6-Tire	3 Axle Single	4 Axle Single	4 Axle Double	5 Axle Double	>6 Axle Double	<6 Axle Multi	6 Axle Multi	>6 Axle Multi	Unclassified		
2/25/2020	0.3%	75.6%	17.4%	0.9%	5.2%	0.3%	0.0%	0.2%	0.0%	0.0%	0.0%	0.0%	0.0%	0.0%	17	4334	997	50	300	18	0	13	1	0	0	0	0	0	2	5732
2/26/2020	0.4%	75.9%	17.1%	1.0%	5.0%	0.3%	0.0%	0.3%	0.0%	0.0%	0.0%	0.0%	0.0%	0.1%	22	4359	981	55	288	17	0	15	0	0	0	0	0	0	8	5745
2/27/2020	0.6%	75.5%	17.4%	0.9%	5.1%	0.2%	0.0%	0.2%	0.0%	0.0%	0.0%	0.0%	0.0%	0.0%	36	4373	1006	53	296	12	1	13	0	0	0	0	0	1	5791	
Total	0.4%	75.7%	17.3%	0.9%	5.1%	0.3%	0.0%	0.2%	0.0%	0.0%	0.0%	0.0%	0.0%	0.1%	75	13066	2984	158	884	47	1	41	1	0	0	0	0	11	17268	

Class Data Summary

Bin #	1	2	3	4	5	6	7	8	9	10	11	12	13	14	Total Volume
Bin Class	Cycles	Cars + Trailer	2 Axle Long	Bus	2 Axle 6-Tire	3 Axle Single	4 Axle Single	4 Axle Double	5 Axle Double	>6 Axle Double	<6 Axle Multi	6 Axle Multi	>6 Axle Multi	Unclassified	Total Volume
Survey Total	75	13066	2984	158	884	47	1	41	1	0	0	0	0	11	17268
% Total	0.4%	75.7%	17.3%	0.9%	5.1%	0.3%	0.0%	0.2%	0.0%	0.0%	0.0%	0.0%	0.0%	0.1%	100%
Accumulated %	0.4%	76.1%	93.4%	94.3%	99.4%	99.7%	99.7%	99.9%	99.9%	99.9%	99.9%	99.9%	99.9%	100.0%	
Inv. Accum. %	99.6%	23.9%	6.6%	5.7%	0.6%	0.3%	0.3%	0.1%	0.1%	0.1%	0.1%	0.1%	0.1%	0.0%	



Classification Descriptions

Bin #	Bin Description
1	Motorcycles
2	Passenger cars, including those with recreational trailers
3	2-axle pick-ups, vans, and RVs, including those with recreational trailers
4	Buses
5	2-axle, 6-tire single units
6	3-axle single units
7	4-axle single units
8	3-axle or 4-axle double unit
9	5-axle double unit
10	6-, 7-, or 8-axle double unit
11	5-axle multiple unit
12	6-axle multiple unit
13	7-or-more-axle multiple unit
14	Vehicles that could not be classified

Site notes:

Wilkinson Rd between West Saanich Rd and Mann Ave

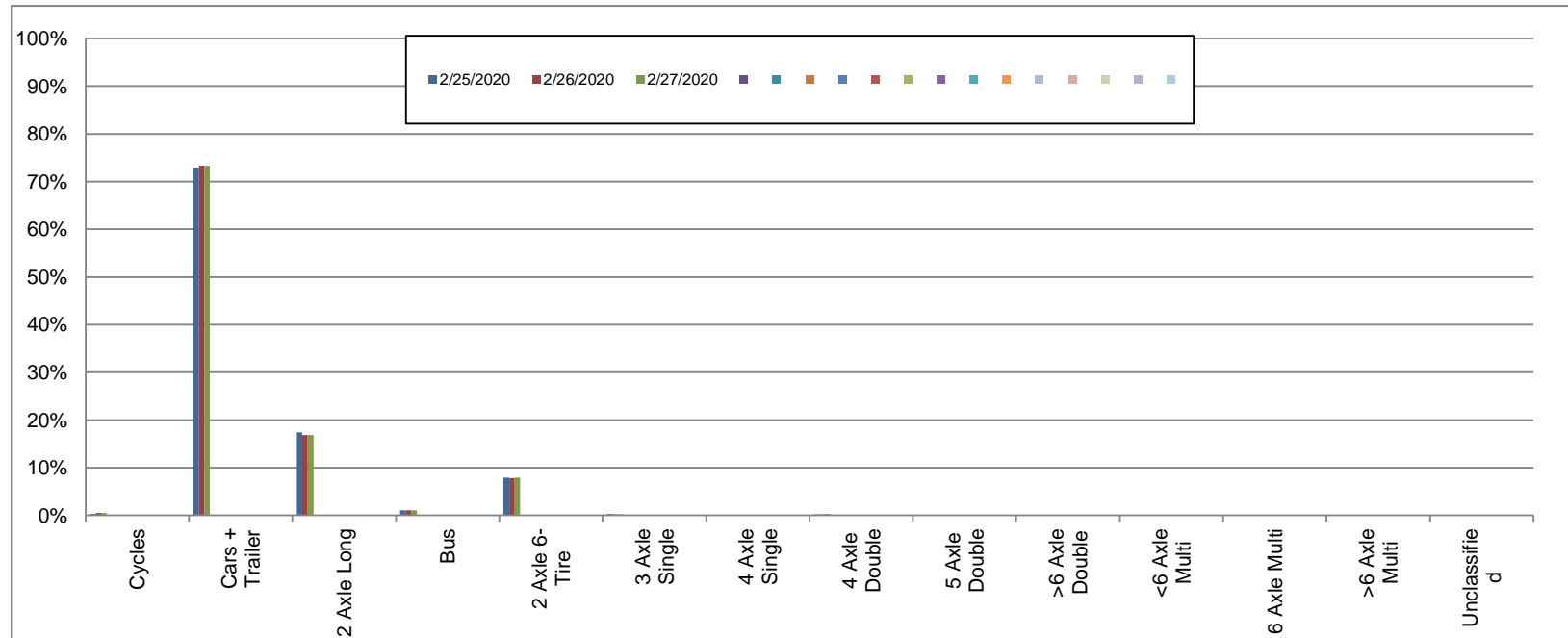
Eastbound

February 25, 2020 to February 27, 2020

Daily Class Bin Percentages															Daily Class Bin Volumes											Total Volume			
Bin #	1	2	3	4	5	6	7	8	9	10	11	12	13	14	1	2	3	4	5	6	7	8	9	10	11		12	13	14
Bin Class	Cycles	Cars + Trailer	2 Axle Long	Bus	2 Axle 6-Tire	3 Axle Single	4 Axle Single	4 Axle Double	5 Axle Double	>6 Axle Double	<6 Axle Multi	6 Axle Multi	>6 Axle Multi	Unclassified	Cycles	Cars + Trailer	2 Axle Long	Bus	2 Axle 6-Tire	3 Axle Single	4 Axle Single	4 Axle Double	5 Axle Double	>6 Axle Double	<6 Axle Multi	6 Axle Multi	>6 Axle Multi	Unclassified	
2/25/2020	0.3%	72.8%	17.4%	1.1%	7.9%	0.3%	0.0%	0.2%	0.0%	0.0%	0.0%	0.0%	0.0%	0.0%	24	5340	1274	78	576	22	1	17	3	0	0	0	0	2	7337
2/26/2020	0.5%	73.3%	16.8%	1.1%	7.8%	0.2%	0.0%	0.2%	0.0%	0.0%	0.0%	0.0%	0.0%	0.0%	36	5531	1268	82	590	18	1	15	0	0	0	0	0	3	7544
2/27/2020	0.5%	73.1%	16.8%	1.1%	7.9%	0.2%	0.0%	0.3%	0.0%	0.0%	0.0%	0.0%	0.0%	0.0%	35	5342	1226	79	575	18	0	24	3	0	0	0	1	2	7305
Total	0.4%	73.1%	17.0%	1.1%	7.8%	0.3%	0.0%	0.3%	0.0%	0.0%	0.0%	0.0%	0.0%	0.0%	95	16213	3768	239	1741	58	2	56	6	0	0	0	1	7	22186

Class Data Summary

Bin #	1	2	3	4	5	6	7	8	9	10	11	12	13	14	Total Volume
Bin Class	Cycles	Cars + Trailer	2 Axle Long	Bus	2 Axle 6-Tire	3 Axle Single	4 Axle Single	4 Axle Double	5 Axle Double	>6 Axle Double	<6 Axle Multi	6 Axle Multi	>6 Axle Multi	Unclassified	Total Volume
Survey Total	95	16213	3768	239	1741	58	2	56	6	0	0	0	1	7	22186
% Total	0.4%	73.1%	17.0%	1.1%	7.8%	0.3%	0.0%	0.3%	0.0%	0.0%	0.0%	0.0%	0.0%	0.0%	100%
Accumulated %	0.4%	73.5%	90.5%	91.6%	99.4%	99.7%	99.7%	99.9%	100.0%	100.0%	100.0%	100.0%	100.0%	100.0%	
Inv. Accum. %	99.6%	26.5%	9.5%	8.4%	0.6%	0.3%	0.3%	0.1%	0.0%	0.0%	0.0%	0.0%	0.0%	0.0%	



Classification Descriptions

Bin #	Bin Description
1	Motorcycles
2	Passenger cars, including those with recreational trailers
3	2-axle pick-ups, vans, and RVs, including those with recreational trailers
4	Buses
5	2-axle, 6-tire single units
6	3-axle single units
7	4-axle single units
8	3-axle or 4-axle double unit
9	5-axle double unit
10	6-, 7-, or 8-axle double unit
11	5-axle multiple unit
12	6-axle multiple unit
13	7-or-more-axle multiple unit
14	Vehicles that could not be classified

Site notes: